

Community conservation at



Experience

Seed collections, field trips and revegetation

Training

Training with established seed harvesters and researchers

Conservation

Curly Sedge Creek and Galgi Ngarrk revegetation



Seed production at Melbourne Polytechnic

We have established a pilot SPA in Epping, growing 6 grassland species. Seeds have been harvested and will be propagated by horticulture students to be introduced as tubestock on Curly Sedge Creek, at Wollert Community Farm.

Site visits in Galgi Ngarrk

We have been on site with Parks Victoria Ranger, Tim, who manages the grassland, and are developing our seed collection plan for this spring and summer. We will be focusing on stony knolls at the grassland site.



Goals

To support regional grassland restoration by producing native seed and to increase community knowledge and capacity to lead conservation locally.

What we will do

WCC and community members will be collecting seed, and helping with related projects work - revegetation in Galgi Ngarrk and along the farm's Curly Sedge Creek.

We are working to establish a grassland seed production area (SPA) at Wollert Community Farm to support direct seeding projects on the farm site and in Galgi Ngarrk in the short term.

We have partnered with Parks Victoria to collect seeds from the grassland to supply the SPA. In the following seasons we will introduce seeds and tube stock back into the site.

In the long-term we will be working to integrate the SPA into our on-site social enterprise native nursery to supply seeds to conservation workers regionally.

Get involved:



Training

Mid-October:

Seed collection training, plant identification training

End-October:

Grass identification training

March:

Seed management training

April:

Seed production training



Seed collection

November to March:

Weekly flora surveys and seed collection



Events

Mid-November:

Welcome to Country and Smoking Ceremony

October, November, February & March:

Grassland tours

Mid-March:

Bush food cooking worksop



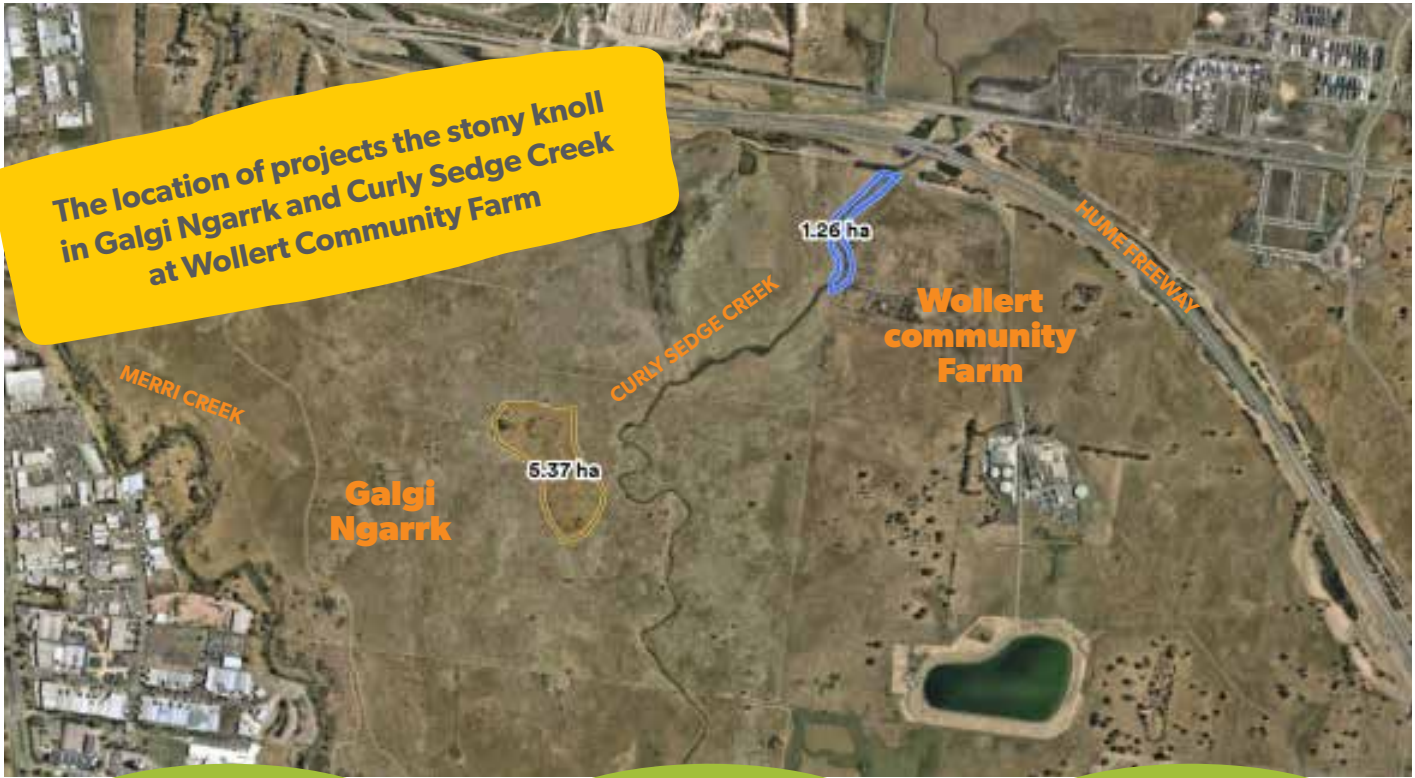
Ongoing volunteering

2023:

Propagating collected seeds for conservation in Galgi Ngarrk

2023: Setting up Seed Production Area at Wollert Community Farm

2023: 5 planting days at Curly Sedge Creek
Monthly meetings



From
spring 2022 to winter 2023
with Parks Victoria

From
2023 onwards

From
late 2022 onwards

WCC and volunteers will be collecting seeds from Galgi Ngarrk and surrounds to grow in the Seed Production Area for further seed harvesting.

With additional funding, WCC will be able to continue working alongside Parks Victoria to propagate and reintroduce key species into a high value stony knoll in Galgi Ngarrk. This will be done by harvesting seeds and tube stock from our SPA to be reintroduced as tube stock/or via direct seeding. This project will create an avenue for community to be involved in a regionally significant ecological asset.

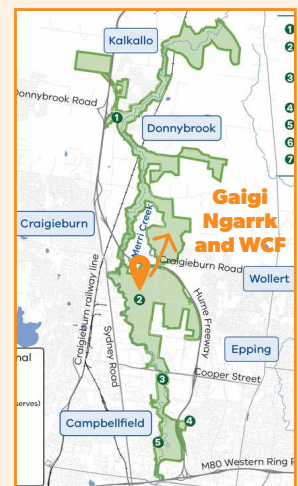
Melbourne Water are funding restoration work to increase ecological health along Curly Sedge Creek at Wollert Community Farm, involving Wurundjeri Woi-Wurrung Narrap Rangers weed management, followed by 5 volunteer planting days in 2023.

Regional context

Galgi Ngarrk and Wollert Community Farm lie within the marran baba Merri Creek Regional Parklands.



Proposed long-term direct seeding and revegetation work will be contributing to the ecological health within the parkland project. The development of a grassland Seed Production Area will help secure the future of grasslands within the parklands project. Restoration and preservation of grasslands is limited by seed supply. Our SPA aims to mitigate this limitation, while also increasing local community capacity and knowledge around preserving and restoring grasslands. The scale of the SPA will increase as seed demand and internal capacity grows, with a long-term goal of contributing significantly to regional conservation.



The Curly Sedge Creek restoration project is supported by Melbourne Water through the Liveable Communities, Liveable Waterways program.

The Growing Seeds for Galgi Ngarrk project is supported by the Victorian Government through the Volunteering Innovation Fund